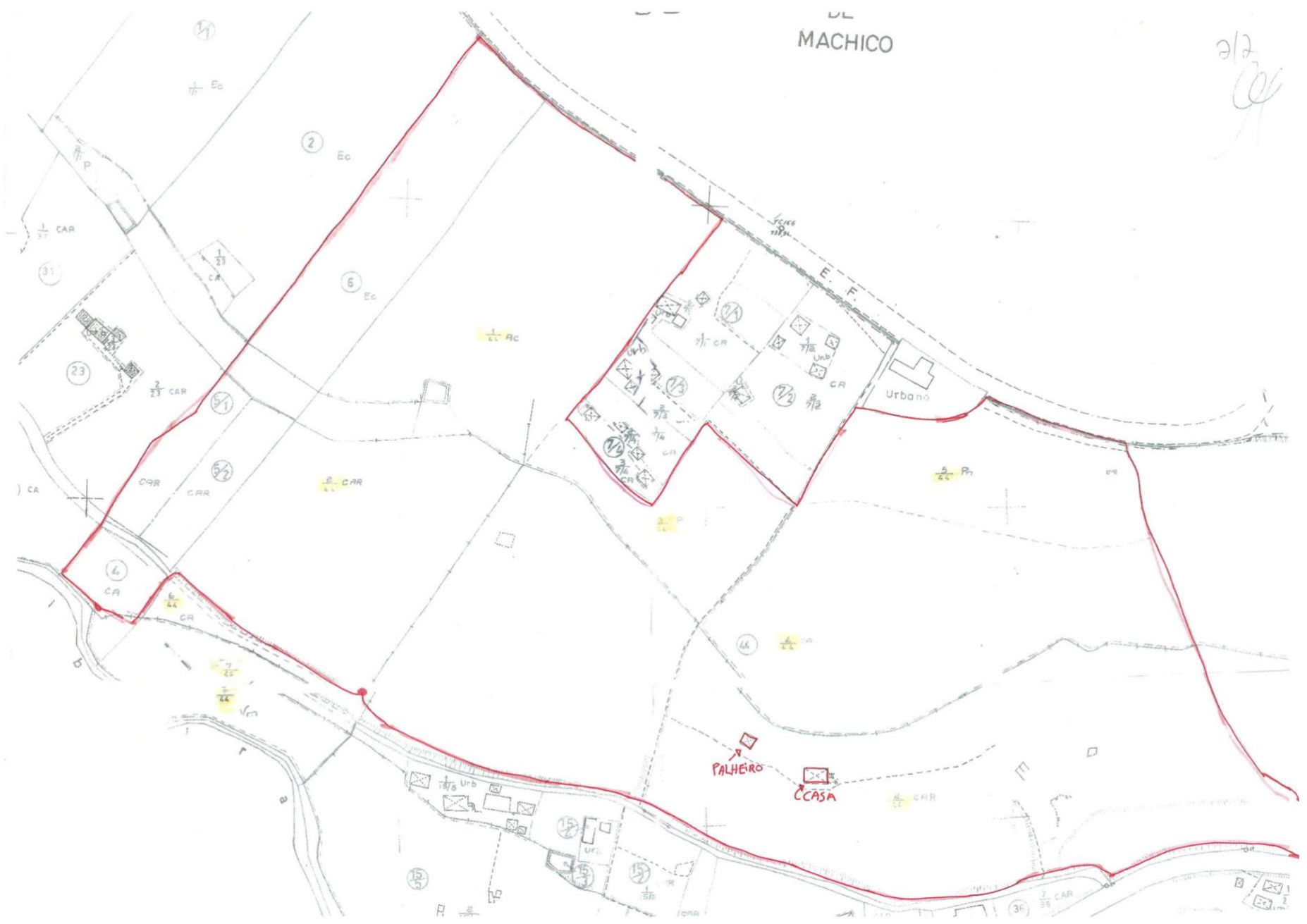


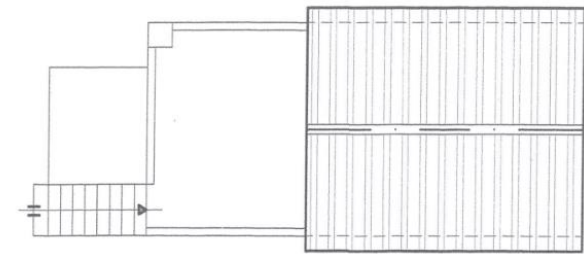
DE
MACHICO

2/2
CE

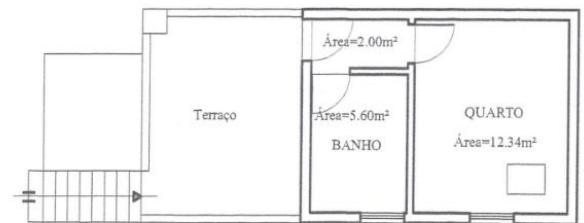




RÉS-DO-CHÃO



COBERTURA

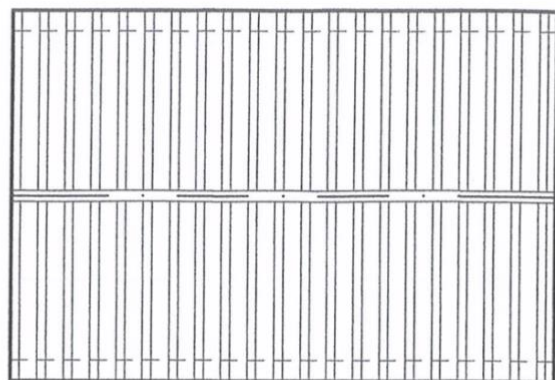


1º ANDAR

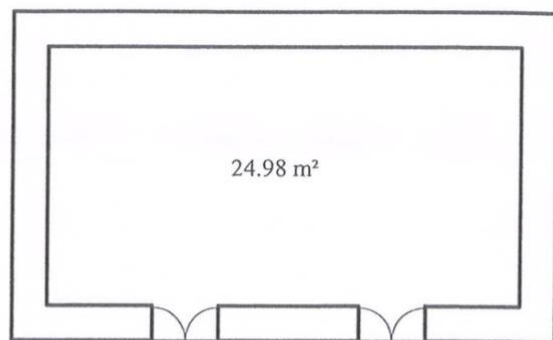
ÁREA DE IMPLANTAÇÃO - 43.50m²

ÁREA BRUTA COBERTA - 68.05m²

ESCALAS	Da Responsabilidade do Requerente	
1/100	Sítio da Achada de Barro, Santo Antonio da Serra, Santa Cruz.	
	LEVANTAMENTO MÉTRICO	Técnico:
Designação:	DE ANTAS.	



COBERTURA



RÉS-DO-CHÃO