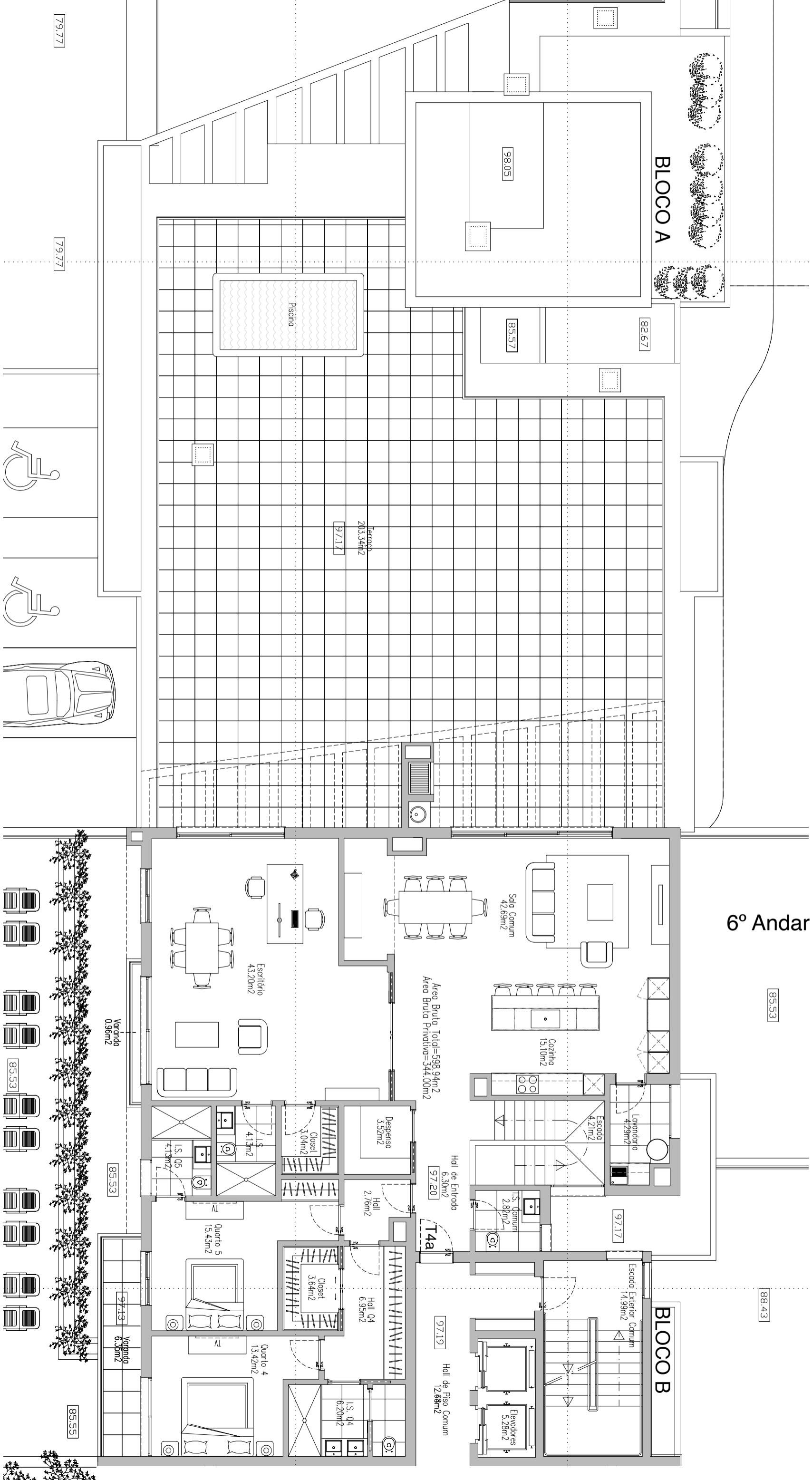


5° Andar - 1° piso
Bloco B

6° Andar - 2° Piso



BLOCCO A

BLOCCO B

85.53

88.43

82.67

85.57

98.05

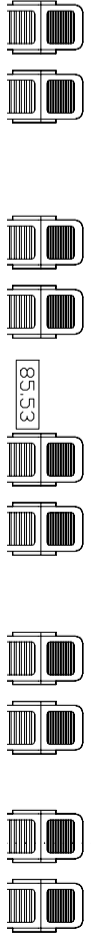
Terrado
203.34m²
97.17

Área Bruta Total=598.94m²
Área Bruta Privativa=344.00m²

T4a

79.77

79.77



85.55

85.53

85.53

97.13

Varanda
6.35m²

Escritório
43.20m²

Sala Comum
42.69m²

Cofina
13.10m²

97.17

Escada
4.21m²

Escada Exterior Comum
14.99m²

Lavandaria
4.29m²

L.S. Comum
2.86m²

Elevadores
5.28m²

Hall de Entrada
6.30m²
97.20

Hall de Piso Comum
12.88m²
97.19

Hall
2.76m²

Hall Q4
6.95m²

Despensa
3.52m²

Closet
3.64m²

L.S. Q4
6.20m²

Closet
3.04m²

L.S. 05
4.13m²

Quarto 4
13.42m²

Varanda
0.96m²

Quarto 5
15.43m²

TV

