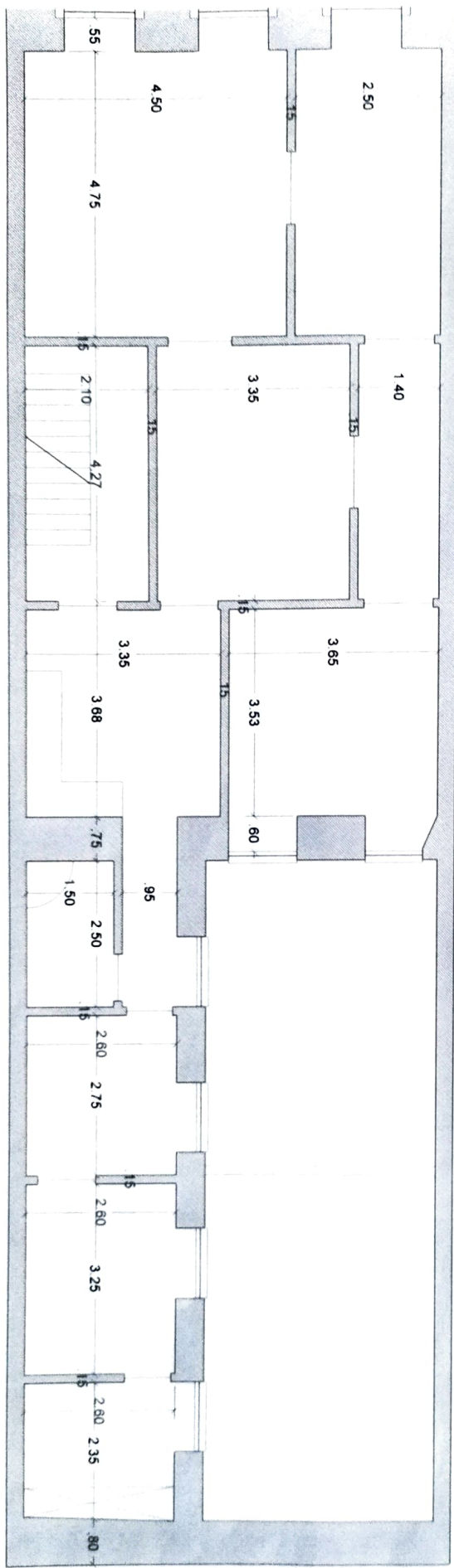


1º Andar :

$$A_{\text{supl}} = 208 \text{ m}^2$$

$$A_{\text{priv}} = 152 \text{ m}^2$$

$$A_{\text{chl}} = 123 \text{ m}^2$$



2º Andar

$$A_{\text{impl}} = 208 \text{ m}^2$$

$$A_{\text{priv}} = 152 \text{ m}^2$$

$$A_{\text{util}} = 123 \text{ m}^2$$

$$A_{\text{dep}} = 93 \text{ m}^2 \text{ (sotão)}$$

