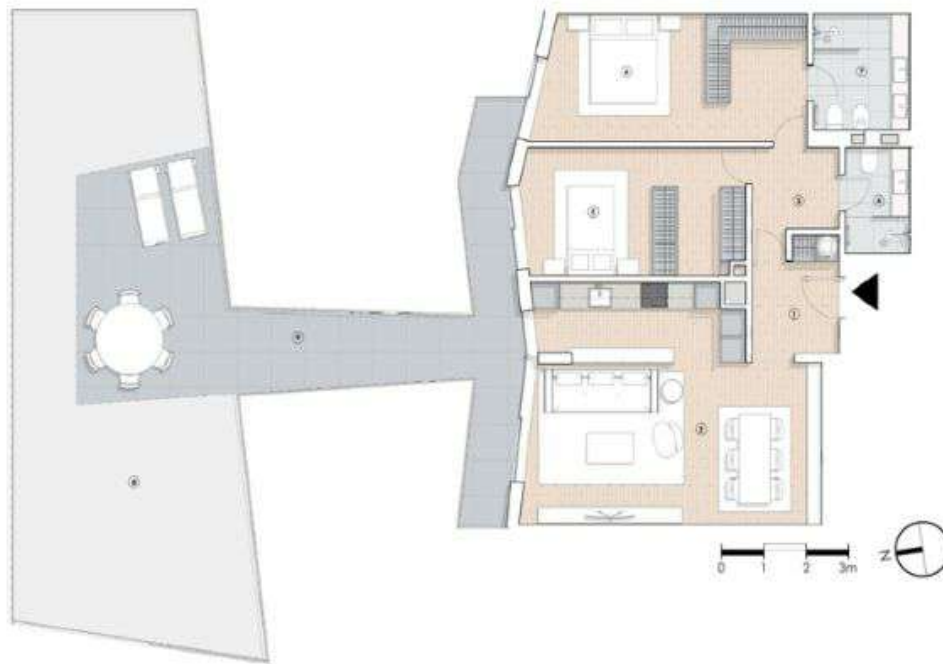


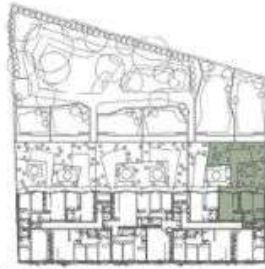
Piso 2 - FRAÇÃO Q - tipologia T2

Área Bruta - 97m²

As áreas apresentadas são aproximadas, indicativas e sem carácter contratual.










Planta piso -1



Planta piso 2

Legenda:

-  Vegetação
-  Pavimento em madeira de carvalho
-  Pavimento cerâmico
-  Pavimento exterior em betão poroso
-  Tampo de bancada em pedra ultracompacta
-  Tampo de bancada em pedra ultracompacta
-  Capinzeiras lacadas

	ÁREA
1	ático 5,09 m²
2	sala/cozinha 33,36 m²
3	circulação 4,25 m²
4	l.s. 3,43 m²
5	quarto 14,78 m²
6	suite 17,75 m²
7	l.s. - suite 5,98 m²
8	jardim 51,97 m²
9	terraço 38,61 m²