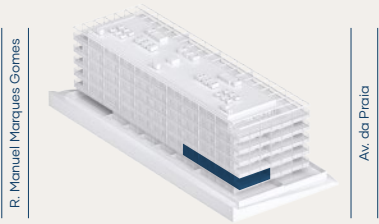


M2.A2L_T3

ÁREA TOTAL (M²) **200.7 m²**

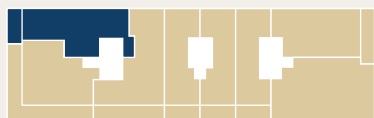


ÁREA BRUTA P. (M²) **133.7 m²**

ÁREA EXTERIOR (M²) **36.2 m²**

ESTACIONAMENTO (M²) **27.4 m²**

ARRECADAÇÕES (M²) **3.4 m²**



PISO 2

