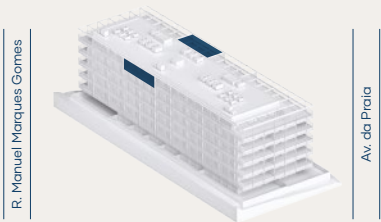


M2.C6AS_T4

ÁREA TOTAL (M²) **282.5 m²**

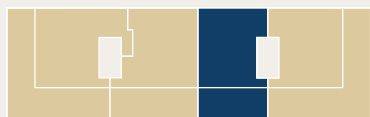


ÁREA BRUTA P. (M²) **164.1 m²**

ÁREA EXTERIOR (M²) **82.3 m²**

ESTACIONAMENTO (M²) **28.6 m²**

ARRECADAÇÕES (M²) **7.5 m²**



PISO 6

