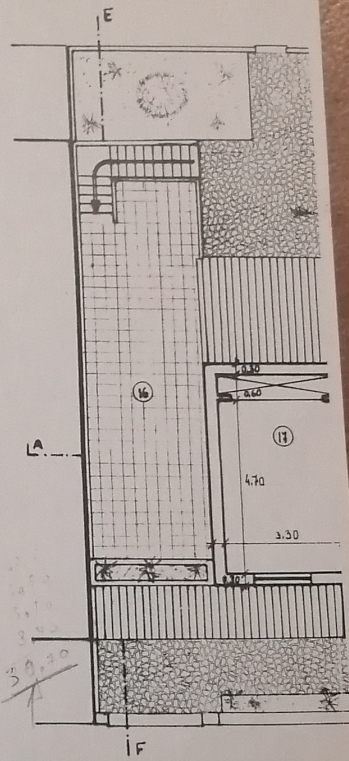
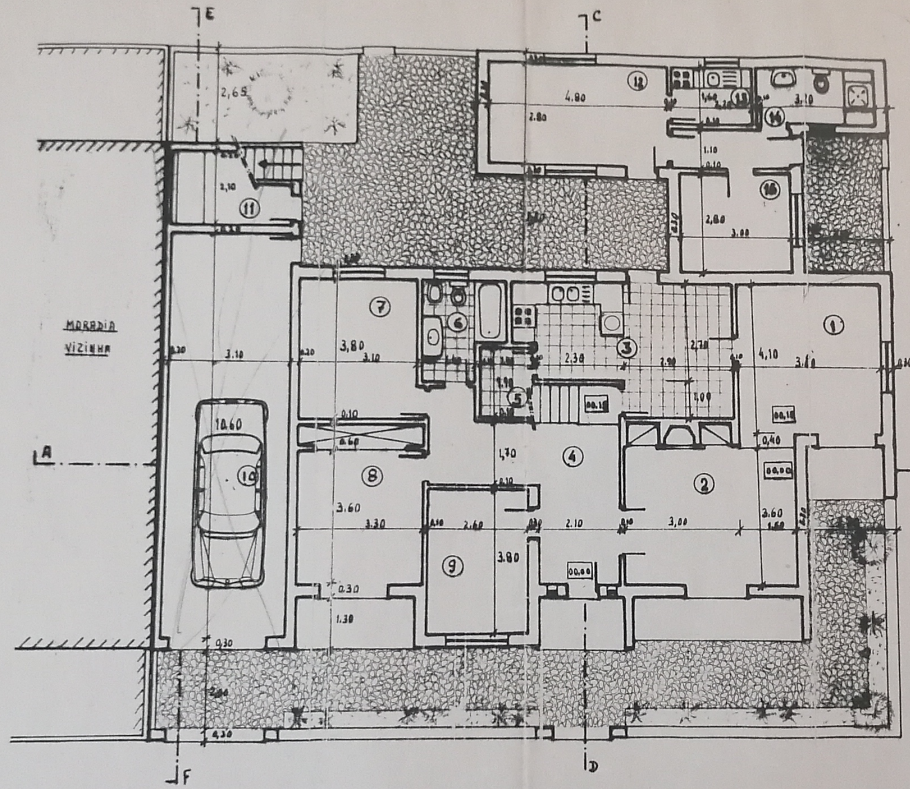


$13,40 \times 6 = 80,40$
 $2,80 \times 1,00 = 2,80$
 $3,30 \times 2,80 = 9,24$
 $75,04$

$13,50 \times 7,70 = 103,05$
 $2,40 \times 6,00 = 14,40$
 $3,70 \times 2,70 = 10,00$
 $8,80 \times 3,50 = 30,80$
 $2,30 \times 2,40 = 5,52$
 $155,77$

$17,10$
 $17,40$
 $17,30$
 $77,00 = 75,04$



PLANTA DO 1º PISO I

- ① - SALA DE JANTAR (15,60 m²)
- ② - SALA DE ESTAR (18,00 m²)
- ③ - COZINHA (18,10 m²)
- ④ - HALL (14,50 m²)
- ⑤ - CASA DE BANHO (5,30 m²)
- ⑥ - DESPENSA (2,45)
- ⑦ - QUARTO (11,80 m²)
- ⑧ - QUARTO (12,90 m²)

- ⑨ - ESCRITÓRIO (9,90 m²)
- ⑩ - GARAGEM (32,85 m²)
- ⑪ - LAVABÓRIA (5 m²)
- ⑫ - SALÃO (casinha "INTEJANAR") (13,70 m²)
- ⑬ - KITCHENETTE (3,50 m²)
- ⑭ - CASA DE BANHO (5,10 m²)
- ⑮ - ARRUMOS (8,40 m²)

- ⑯ - TERRAÇO (31 m²)
- ⑰ - QUARTO (17,50 m²)
- ⑱ - ANTE-CÂMARA (6,50 m²)
- ⑲ - CASA DE BANHO (5,25 m²)
- ⑳ - MEZANINE (7,00 m²)
- ㉑ - TERRAÇO (38,00 m²)

13,40 (30%)
 140,25
 200,00