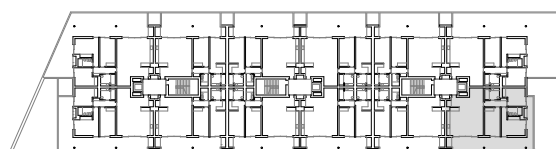


First Floor - Unit Z
Apartment 3.1C T3 (includes private parking space)

Construction Area (excl. balconies / flowerbeds):
150.75 m² *

01 - Entrance Hall	04.00 m ²	07 - Study Room	14.30 m ²
02 - Kitchen	13.25 m ²	08 - Hallway	05.95 m ²
03 - Living/Dining Room	36.20 m ²	09 - Bathroom	06.30 m ²
04 - Bedroom	16.85 m ²	10 - Multipurpose Room	05.05 m ²
05 - Bedroom	18.80 m ²	11 - Terrace/Balcony	59.25 m ²
06 - Ensuite Bathroom	04.50 m ²		



* Area subject to confirmation