



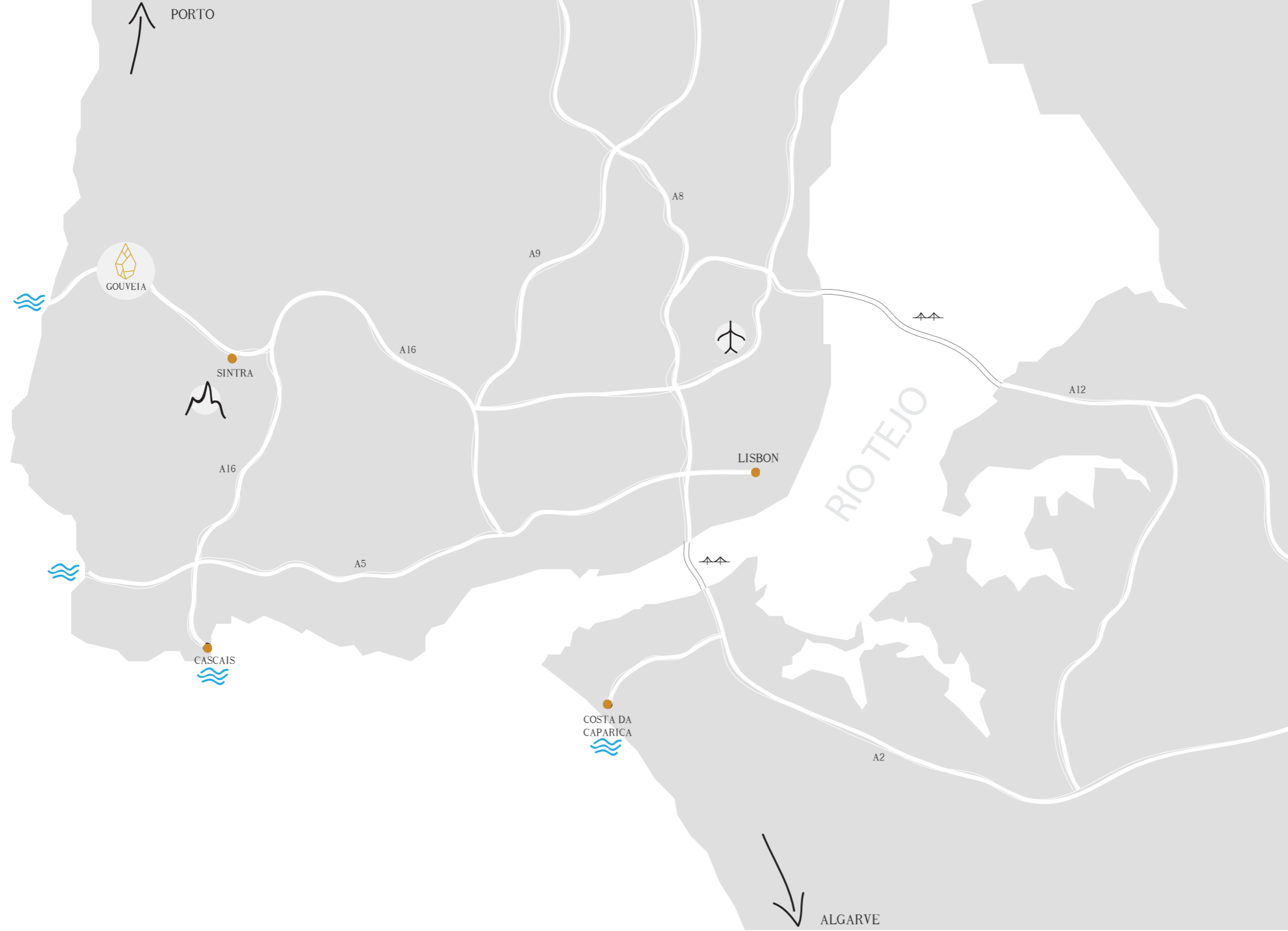
**GOUVEIA**  
LUXURY VILLAS





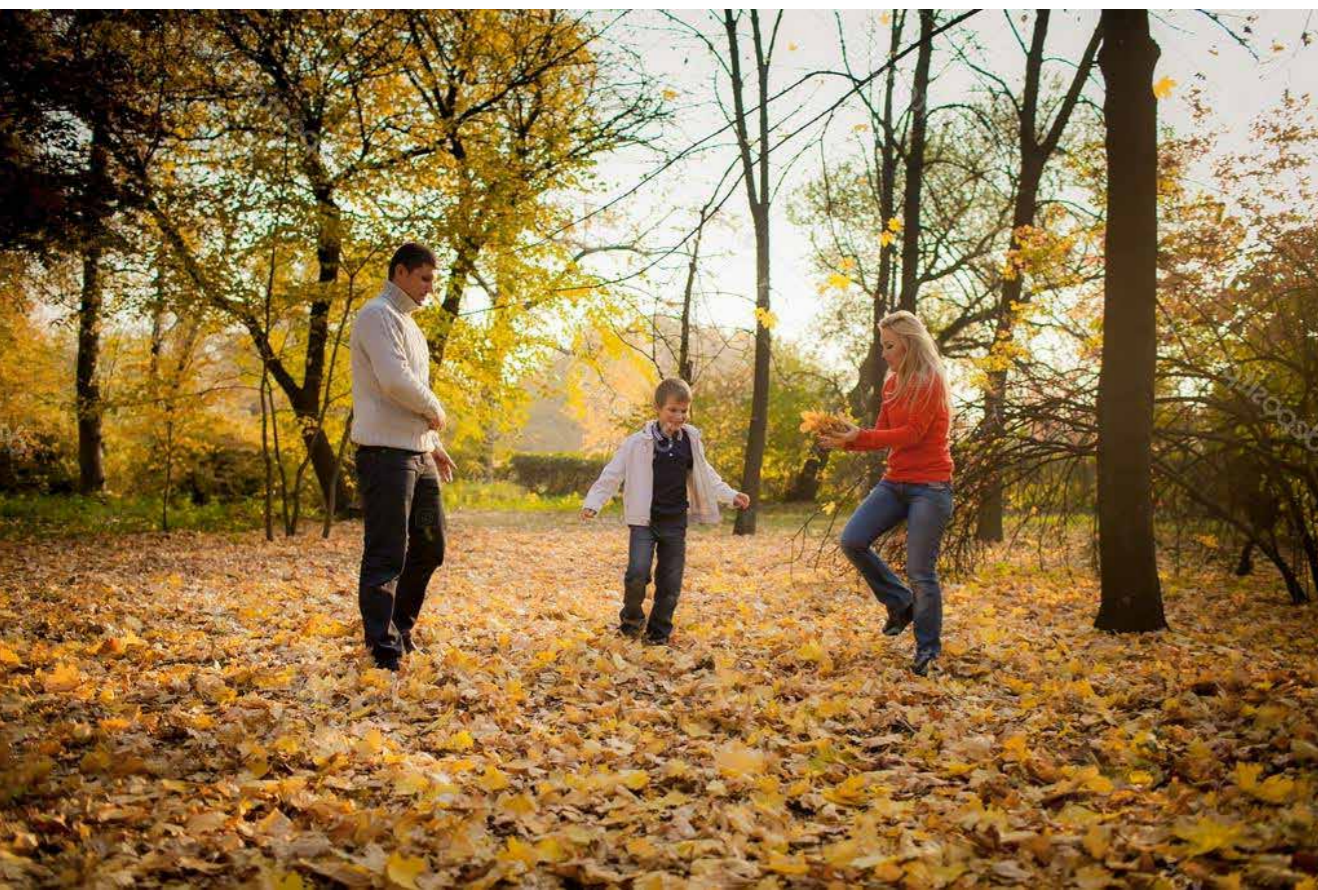
GOUVEIA  
LUXURY VILLAS





- 25 minutes from LISBON international airport ;
- 20 minutes from LISBON center city ;
- 10 minutes from the beach ;
- most famous touristic spot from PORTUGAL ;
- SINTRA world heritage by UNESCO ;
- near to shopping centers ;
- best international schools ;
- prestigious locations for residencial villas ;









GERAL VIEW

LUXURY VILLAS





PLOT N°	PLOT AREA
1	792.00 m2
2	523.00 m2
3	557.00 m2
4	594.00 m2
5	564.00 m2
6	732.00 m2







06













T3

LUXURY VILLAS

- contemporary architecture ;
- finishing details of excellence ;
- long durability and quality materials ;
- private swimming pools and green areas ;





01







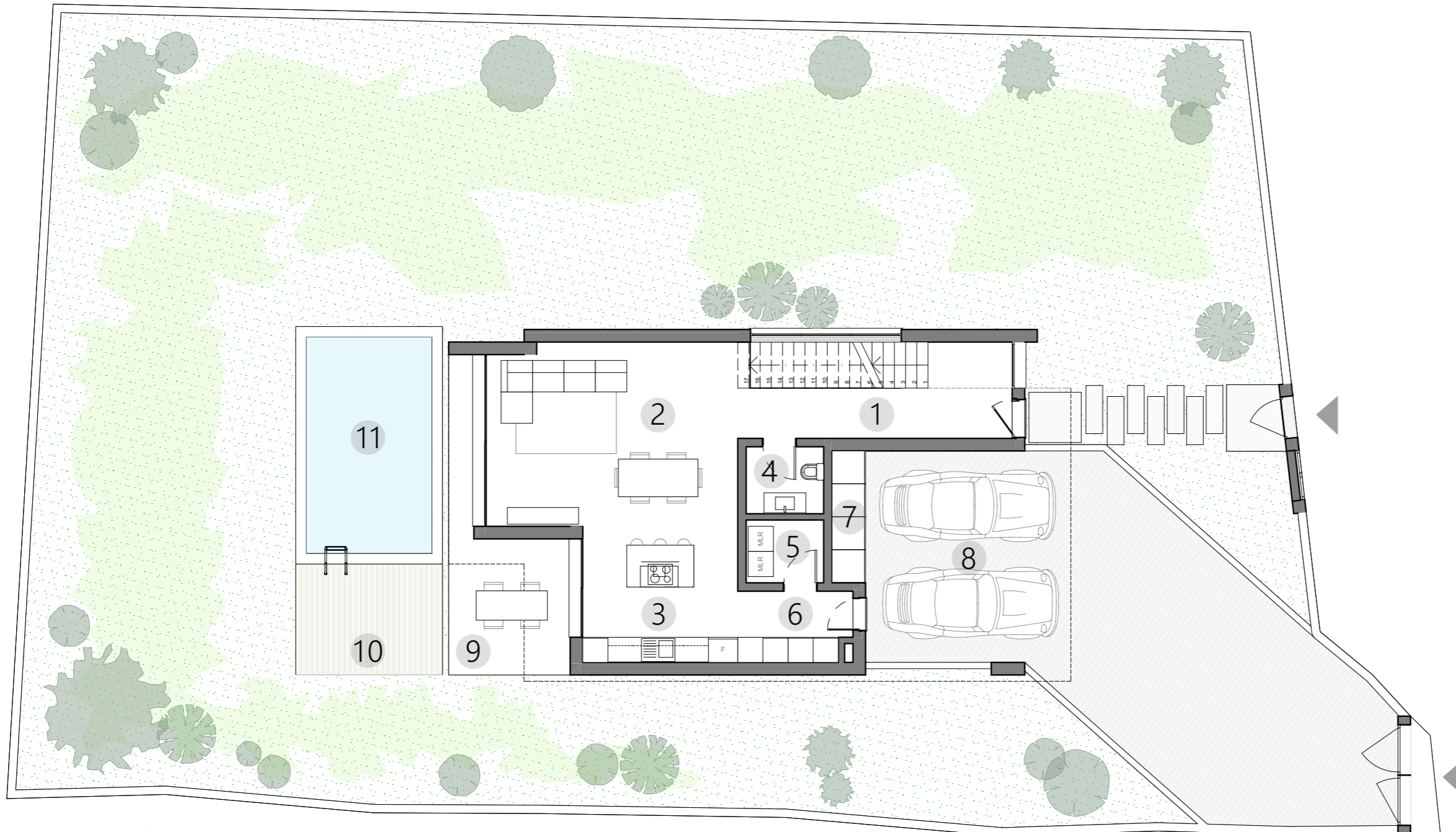








## Ground Floor Plan



1 Comunciations - 15.06m<sup>2</sup>

2 Living Area - 26.04m<sup>2</sup>

3 Kitchen - 12.02m<sup>2</sup>

4 Toilet -2.96 m<sup>2</sup>

5 Laundry -2.77 m<sup>2</sup>

6 Storage -4.46 m<sup>2</sup>

7 Exterior Storage -2.52 m<sup>2</sup>

---

Useful Area - 65.83 m<sup>2</sup>

8 Parking area - 24.74 m<sup>2</sup>

9 Patio - 12.07 m<sup>2</sup>

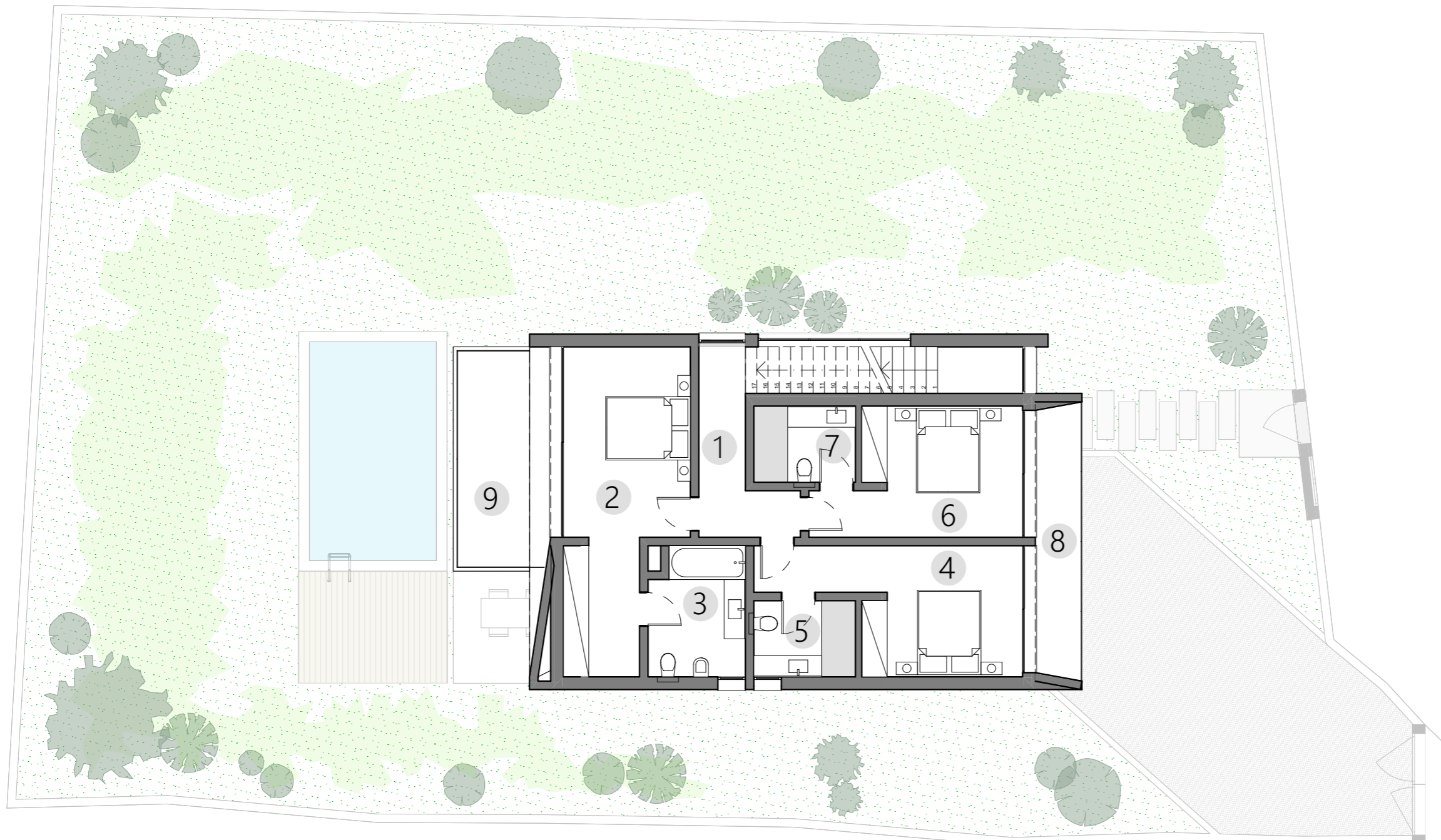
10 Solarium/Deck - 9.33 m<sup>2</sup>

11 Pool - 19.85 m<sup>2</sup>

Floor Built Area - 80.59 m<sup>2</sup>

\* Plot 01 used as a reference.





## First Floor Plan

1 Comunciations - 11.37m<sup>2</sup>

2 Suite 1 - 19.32 m<sup>2</sup>

3 Suite 1 Toilet - 6.73 m<sup>2</sup>

4 Suite 2 - 14.46 m<sup>2</sup>

5 Suite 2 Toilet - 4.34 m<sup>2</sup>

6 Suite 3 - 13.04 m<sup>2</sup>

7 Suite 3 Toilet - 4.32 m<sup>2</sup>

8 Suite 2/3 Balcony - 7.04 m<sup>2</sup>

---

**Useful Area - 80.62 m<sup>2</sup>**

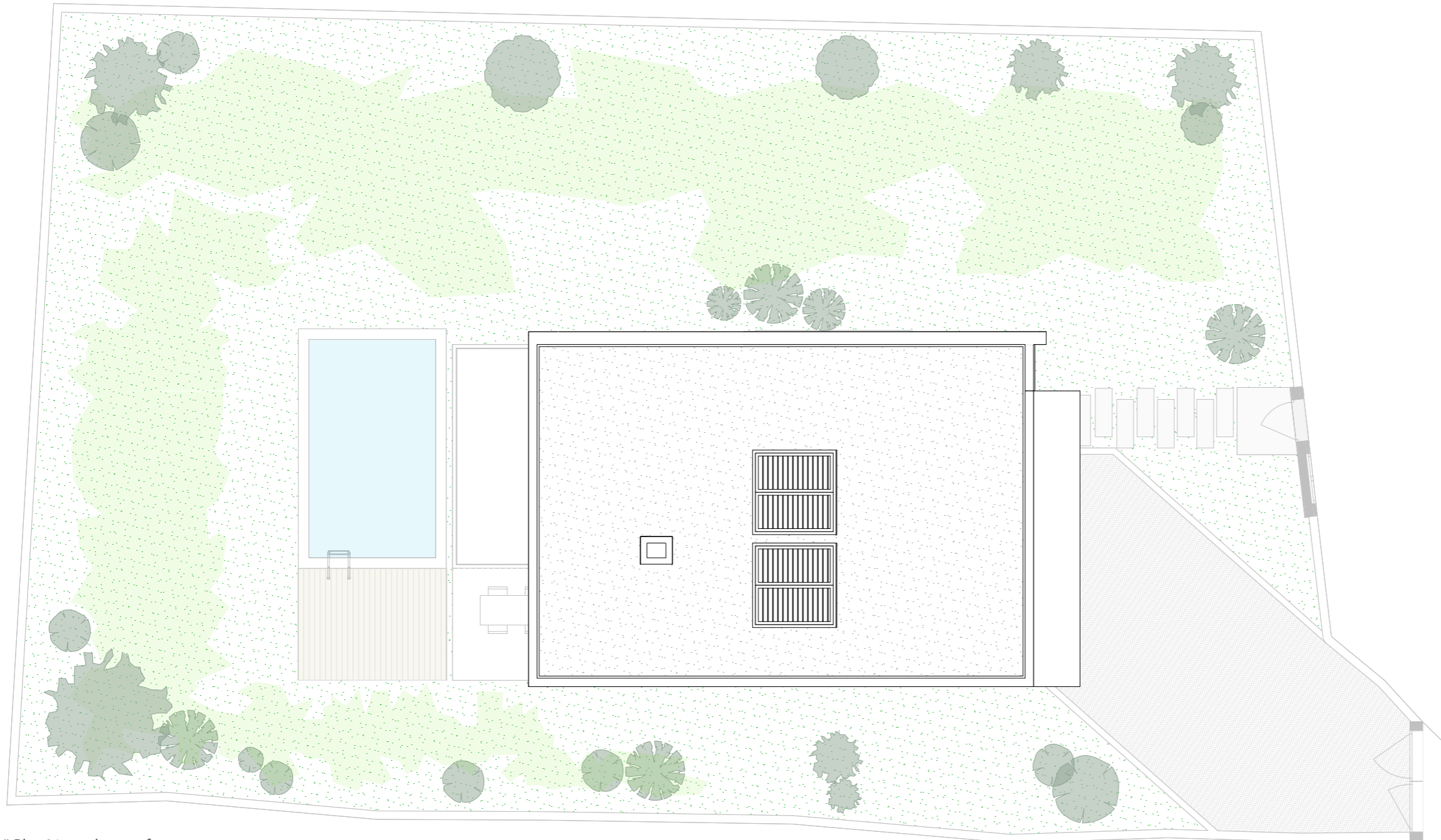
9 Suite 1 Balcony - 12.14 m<sup>2</sup>

**Floor Built Area - 102.93 m<sup>2</sup>**

\* Plot 01 used as a reference.



## Mass Plan



\* Plot 01 used as a reference.

### RESUME

Total Useful Area - 146.45 m<sup>2</sup>

Total Built Area - 183.52 m<sup>2</sup>





geral.refarquitectos@gmail.com

Filipe Camacho  
filipecamacho@refarquitectos.pt  
+351 968 057 514

Ruben Cardoso  
rubencardoso@refarquitectos.pt  
+351 968 068 987

**REF**  
ARQUITECTOS

ARQUITECTURA | DESIGN | PLANEAMENTO

Azinhaga Poço Barral, Edif. SPF Business Center, nº  
Piso Intermédio - Fração A  
9000-638 | Funchal

+351 291 232 670





**PTGOLDENVISA**  
[www.ptgoldenvisa.com](http://www.ptgoldenvisa.com)

**REF**  
ARQUITECTOS

**ETERNALBONUS**  
Developer & Reconstruction