



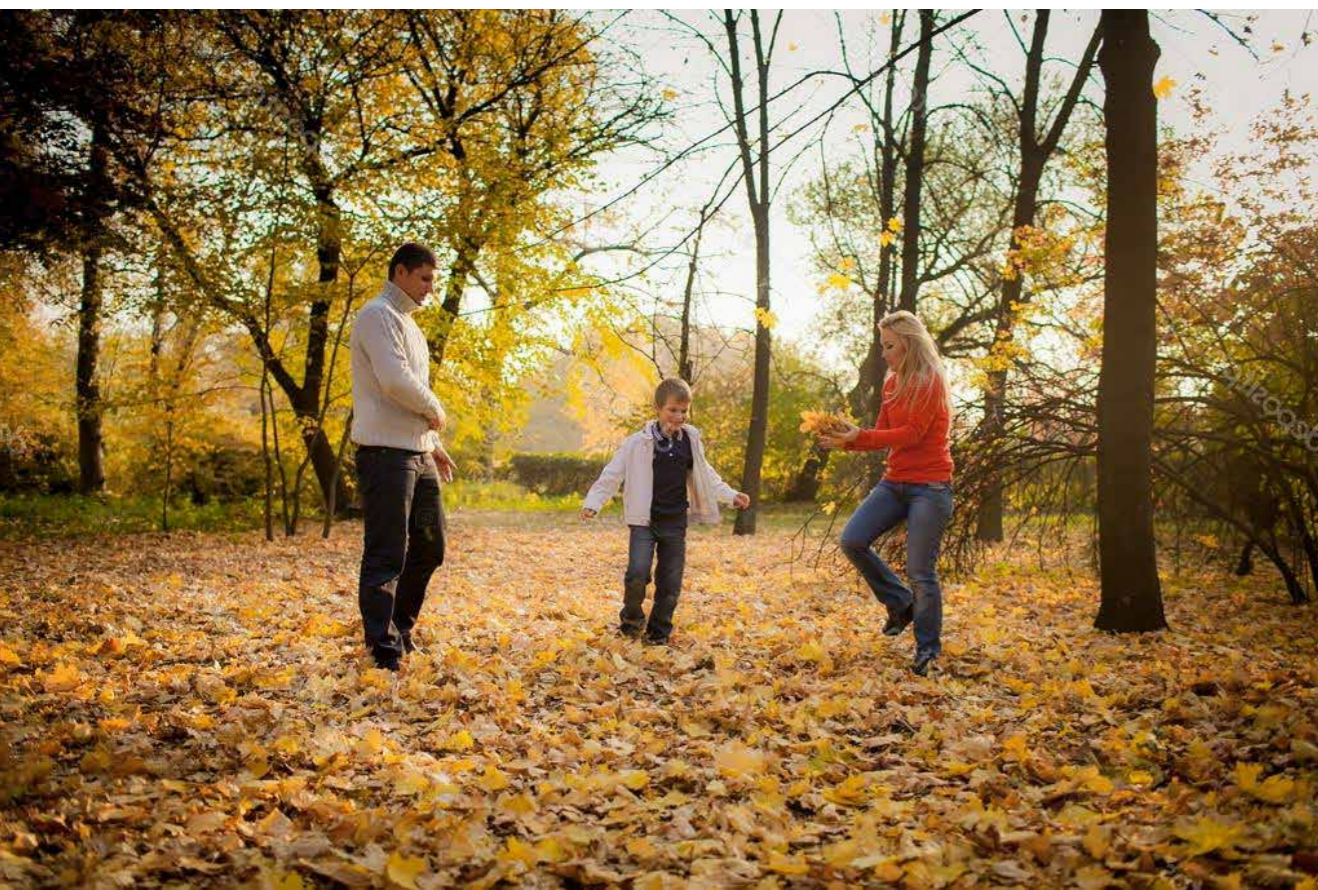
FONTANELAS
LUXURY VILLAS



FONTANELAS
LUXURY VILLAS



- 25 minutes from LISBON international airport ;
- 20 minutes from LISBON center city ;
- 10 minutes from the beach ;
- most famous touristic spot from PORTUGAL ;
- SINTRA world heritage by UNESCO ;
- near to shopping centers ;
- best international schools ;
- prestigious locations for residencial villas ;





GERAL VIEW

LUXURY VILLAS



PLOT Nº	PLOT AREA
01	560 m ²
02	649 m ²
03	711 m ²
04	501 m ²
05	500 m ²
06	502 m ²
07	543 m ²
08	552 m ²
09	583 m ²
10	649 m ²
11	856 m ²
12	551 m ²
13	552 m ²
14	552 m ²
15	552 m ²
16	578 m ²
17	512 m ²
18	512 m ²
19	538 m ²
20	505 m ²



12







T3

LUXURY VILLAS

- contemporary architecture ;
- finishing details of excellence ;
- long durability and quality materials ;
- private swimming pools and green areas ;









Ground Floor Plan

1 Comunications - 20.56m²

2 Living Area - 21.53 m²

3 Kitchen - 15.60m²

4 Toilet - 3.13m²

5 Laundry - 3.00m²

6 Exterior Storage - 2.38 m²

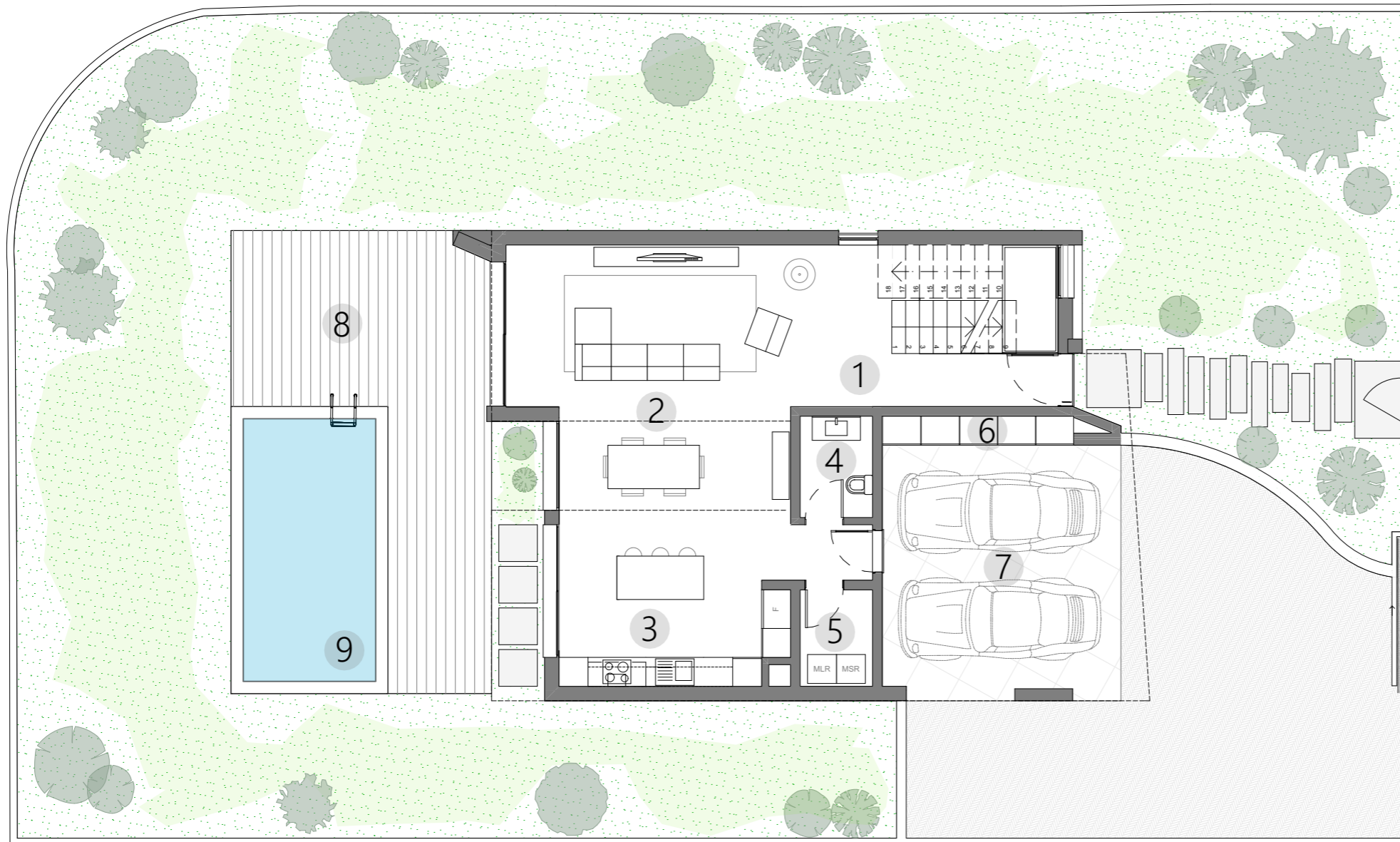
7 Covered Parking - 26.23 m²

Useful Area - 92.43 m²

8 Solarium/Deck - 32.51 m²

9 Pool - 19.34 m²

Floor Built Area - 117.55 m²



* Plot 20 used as a reference.

First Floor Plan

1 Comunciations - 16.77m²

2 Suite 1 - 15.97 m²

3 Suite 1 Toilet - 6.93 m²

4 Suite 1 Balcony - 3.58 m²

5 Suite 2 - 16.84 m²

6 Suite 2 Toilet - 5.12 m²

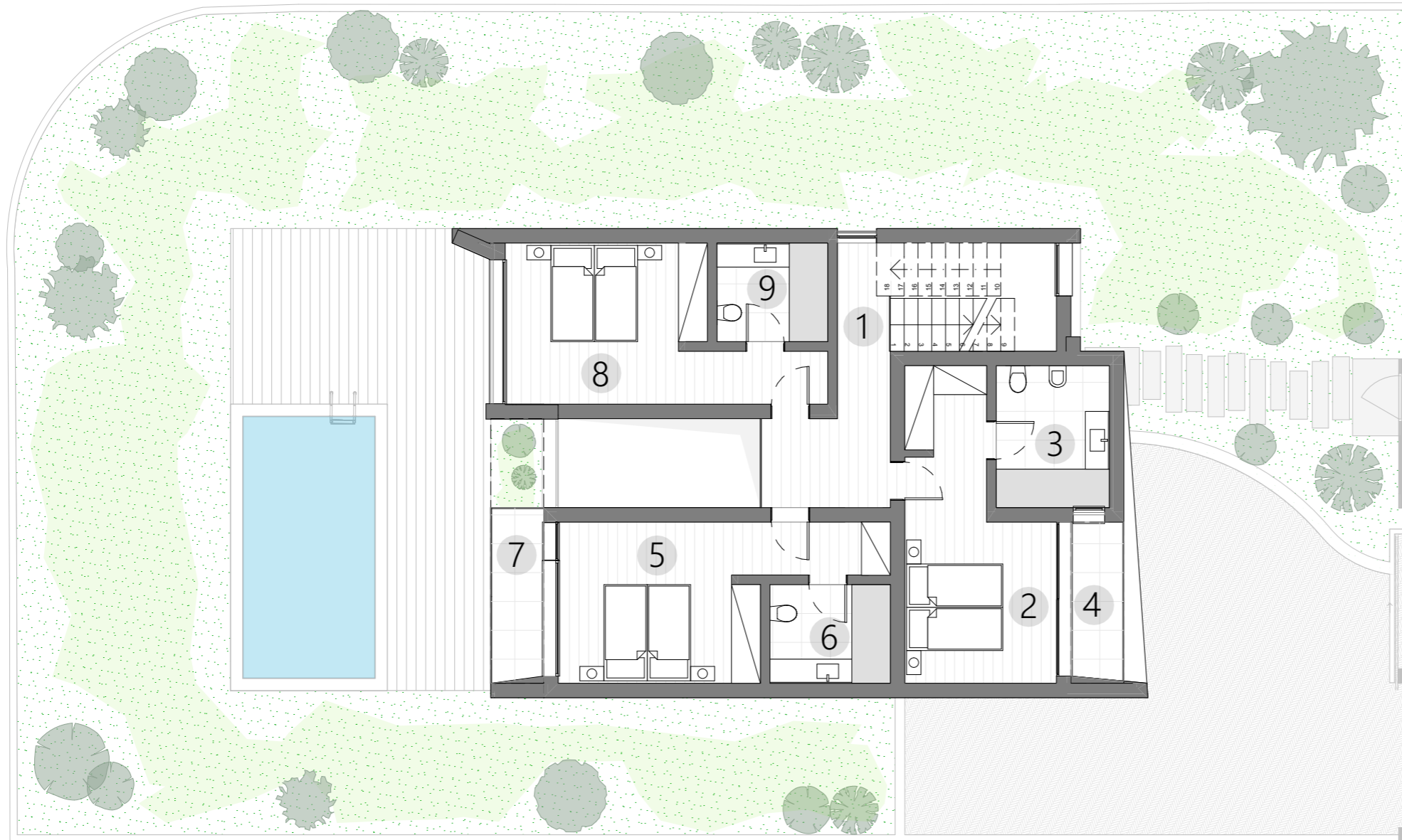
7 Suite 2 Balcony - 3.93 m²

8 Suite 3 - 16.65 m²

9 Suite 3 Toilet - 4.71 m²

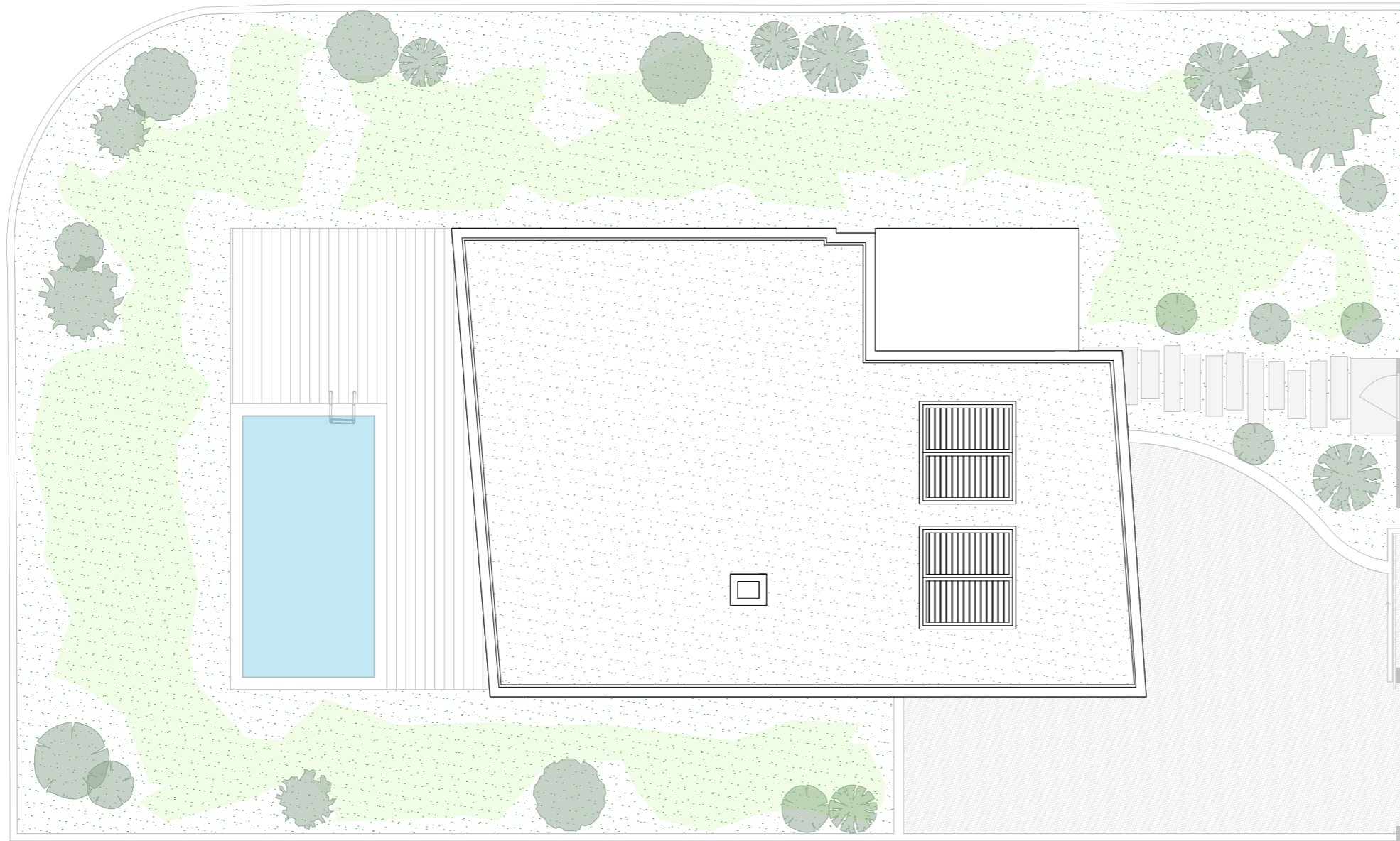
Useful Area - 90.50 m²

Floor Built Area - 117.98 m²



* Plot 20 used as a reference.

Mass Plan



* Plot 20 used as a reference.

RESUME

Total Useful Area - 182.93 m²

Total Built Area - 235.53 m²



geral.refarquitectos@gmail.com

Filipe Camacho
filipecamacho@refarquitectos.pt
+351 968 057 514

Ruben Cardoso
rubencardoso@refarquitectos.pt
+351 968 068 987

REF
ARQUITECTOS

ARQUITECTURA | DESIGN | PLANEAMENTO

Azinhaga Poço Barral, Edif. SPF Business Center, nº
Piso Intermédio - Fração A
9000-638 | Funchal

+351 291 232 670



PTGOLDENVISA
www.ptgoldenvisa.com

REF
ARQUITECTOS

ETERNALBONUS
Developer & Reconstruction